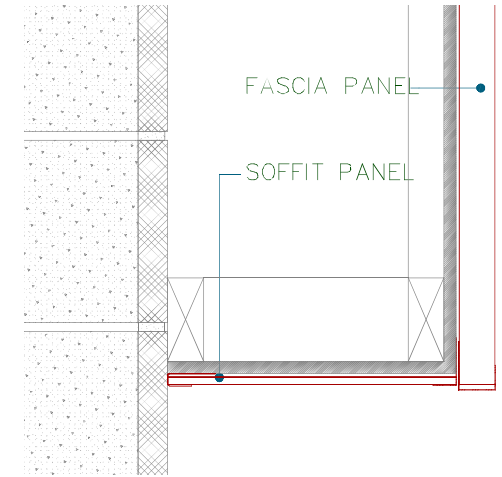
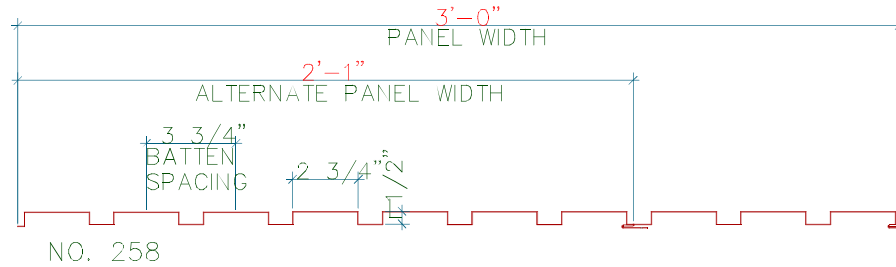


PRIMARY OPTIONS:

METAL: \_\_\_\_\_  
 GAUGE: \_\_\_\_\_  
 COLOR: \_\_\_\_\_

OTHER OPTIONS:

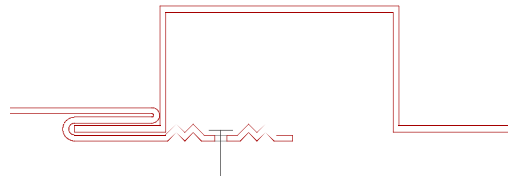
MITERS: \_\_\_\_\_  
 CORNERS: \_\_\_\_\_  
 HIPS: \_\_\_\_\_  
 VALLEYS: \_\_\_\_\_  
 RIDGES: \_\_\_\_\_  
 TOP CHANNEL: \_\_\_\_\_  
 BOTTOM CHANNEL: \_\_\_\_\_



TYPICAL SYSTEM INSTALLATION

GENERAL NOTES:

1. ALL COMPONENTS ARE CUSTOM DESIGNED BY CHENEY FLASHING; SECTION DRAWING IS FOR REFERENCE ONLY.
2. PANEL WIDTHS VARY BETWEEN 2'-6" AND 3'-0".
3. ALL DIMENSIONS AND DETAILS MUST BE COORDINATED AND APPROVED BY CONTRACTOR PRIOR TO FABRICATION.
4. FOR ACCESSORIES AND RELATED PRODUCTS TO COMPLETE SYSTEM, CONTACT CHENEY FLASHING.
5. MAXIMUM 10'-0" PANEL LENGTH.
6. SYSTEM CAN ALSO BE USED AS FASCIA.



FLANGE DETAIL

<b>BATTEN SPACING:</b>	<b>BATTEN HEIGHT:</b>	<b>BATTEN WIDTH:</b>	<b>PANEL WIDTH:</b>	<b>PANEL NO.:</b>	<b>DRIP HEM:</b> N/A	<b>LENGTH:</b>
<b>CUSTOMER:</b>	<b>PROJECT:</b>	<b>LOCATION:</b>	<b>DATE:</b>	<b>SCALE:</b> NONE	<b>QUANTITY:</b>	

**CHENEY FLASHING, LLC**

12100 BALTIMORE AVE  
 SUITE 4  
 BELTSVILLE, MD 20705

PHONE: 301-931-2556  
 FAX: 301-931-2559  
 EMAIL: info@cheneyflashing.com

**NO. 258 SYSTEM  
 FASCIA/SOFFIT PANEL**

DIMENSIONS NOT TO SCALE. PLEASE CONTACT CHENEY FLASHING COMPANY TO PREPARE A FORMAL PROPOSAL WITH FULLY DETAILED DRAWINGS, PRICING, AND TERMS. © CHENEY FLASHING COMPANY



**FP-3**